

## **Access Statement for Tŷ Halen Anglesey Saltcote**

### **Introduction**

Tŷ Halen, Anglesey Saltcote, tells the story of the production of Halen Môn, an artisan sea salt that is sold in over 20 countries. The Saltcote is located on a level site close to the Menai Strait in an area of Outstanding Natural Beauty.

The Saltcote is on the ground floor with step-free access throughout.

The guided tour is accessible to wheelchair users and takes 50 minutes.

We look forward to welcoming you. If you have any queries or require any assistance please phone 01248 430871 or email [hello@halenmon.com](mailto:hello@halenmon.com).

### **Pre-Arrival**

- We are just under 1.5 miles from the centre of Brynsiencyn off the A4080 and the centre is signposted (White on Brown signs) from the A4080.
- Arriving by car: use a journey planning website or SATNAV with our postcode- LL61 6TQ.
- Arriving by train: the nearest main railway station is Bangor, 10 miles away.
- Arriving by bus: a service runs from Bangor to Brynsiencyn. We are a 30 minute walk from the bus stop. A current bus time table can be viewed on [www.anglesey.gov.uk](http://www.anglesey.gov.uk)

### **Car Parking and Arrival**

- There is parking for 20 cars plus one clearly marked Blue Badge parking space on hard standing, 35 yards from the front entrance. The path from the parking space is tarmac and paving.



- The remainder of the car park surface is compacted gravel.
- All doors throughout the Saltcote are wheelchair and pushchair accessible.

### **Main Entrance, Reception, shop and Ticketing Area**

- The main entrance and visitor centre is situated on the ground floor with step free, level access throughout.



- There are two sets of glass doors to the centre, the outer width is 940 mm and the inner is 835mm wide. Both are manual and open towards you as you enter. They are usually kept open during good weather. If you need assistance then you can ring the bell or ring 01248 430871.
- There is a three-seater sofa by a wood burning stove.
- There is a shop with a range of salts and associated giftware in the main entrance.
- The shop is level throughout.
- There is ample room within the shop for a large wheelchair to manoeuvre and turn.
- There are tall display racks and low tables accessible from a seated position.



- The floor surface in the visitor centre / shop is wood.
- The counter is low level (760mm).



- A magnifying glass, pen and pad of paper is available at the counter.
- There is the background sound of the sea shore.
- Staff can offer assistance if required.

**Attraction (displays, exhibits, rides etc.)**

- The floor surfaces on the guided tour are carpet and epoxy resin.

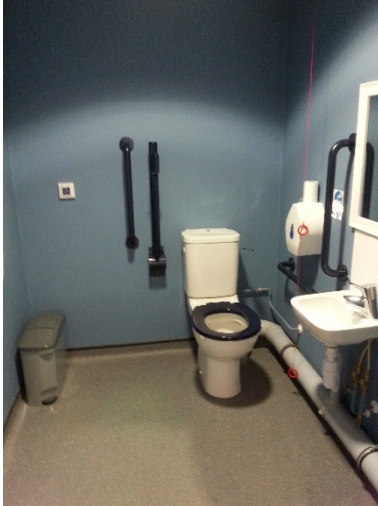


- Interpretation boards have pictorial representation where applicable and are explained by the guide on the tour.
- Lighting on the tour is generally bright.



## **Public Toilets**

- Public toilets are located next to the entrance with level access.
- A RADAR key is not required.
- There is a unisex accessible toilet.



- The door is 760mm wide.
- There is a 760mm transfer space to the left of the toilet as you are facing it.
- The toilet height is 460mm.
- There are rails either side of both basin and toilet.
- There is a horizontal rail on the side wall adjacent to the toilet.
- There is colour contrast with critical surfaces; walls are blue and toilet and washbasins are white, the rails and toilet seat are dark blue
- There is a flashing light when the fire alarm sounds.
- There is an emergency alarm pull cord.
- The toilets are well lit and switches have been replaced by using PIR sensors.
- The flooring is non-slip laminate.
- The combination tap is operated by a lever.

## **Additional Information**

- All of our staff receive regular training that includes disability awareness training.
- We have a set of evacuation procedures – should you require it someone will assist you out of the building.

- We welcome trained assistance dogs. A water bowl is available at the main entrance/exit for assistance dogs.
- Clear signage is used throughout the attraction using white letters on a dark blue background.

### **Contact Information**

Address: Halen Môn / The Anglesey Sea Salt Company  
Tŷ Halen, Anglesey Saltcote,  
Brynsiencyn

Post Code: LL61 6TQ

Telephone: 01248 430871

Email: hello@halenmon.com

Website:

Days of operation: Saturday to Friday [www.halenmon.com](http://www.halenmon.com)

Hours Of Operation: 10am - 5pm

Last Tour: 4pm

DRY